



Safety Data Sheet

Section 1: Product and Company Identification

Company Name: ONNiT Systems
PO Box 1186
Draper, UT 84020
Emergency Number: 801-619-7044

Product Name: High Impact Wall & Ceiling Protections Panels

Commonly used for wall & ceiling protection and to mitigate noise.

Section 2: Hazard Identification

In accordance with Directive 2001/58/EC, this product is not considered dangerous. The dust may cause minor irritation to eyes, skin, or mouth if ingested. This product is not classified as a flammable substance.

Section 3: Composition/Information on Ingredients

Pure Admixture

CAS No.	Chemical Name	Percent
----	Polyester Fiber	100%

Section 4: First Aid Measures

Skin Contact: If your skin comes into contact with the dust from panel, clean with soap and water.

Eyes: If dust from panel gets into eye, flush with water.

Inhalation: If dust from panel is inhaled, move to fresh air.

Ingestion: If any part of panel is ingested, induce vomiting and seek medical attention.

Section 5: Fire Fighting Measures

Danger Characteristics: This product is not classified as a flammable substance

Suitable Extinguishing Method and Media: Water spray, carbon dioxide, dry chemical

Section 6: Accidental Release Measures

Emergency Treatment: Pick up or sweep up large pieces.

Section 7: Handling and Storage

Handling: No specific handling requirements

Storage: Store in cool, well ventilated and dry area

Section 8: Exposure Controls, Personal Protection

Respiratory Protection: N/A

Skin Protection: None required, gloves may be worn

Work Hygiene Practices: None required, wash exposed skin prior to eating.

Section 9: Physical and Chemical Properties

Appearance: Dense pressed non-woven polyester felt board in variety of colors.

No data on flash point, evaporation rate, vapor density, etc.

Section 10: Stability and Reactivity

Stable under normal temperatures and pressure.

Avoid flames and excessive heat.

Hazardous Polymerization will not occur.

Section 11: Toxicological Information

No information is available. This product is not classified as a toxic substance.

Section 12: Ecological Information

No information is available

Section 13: Disposal Considerations

Nature of Waste: Not regulated as Hazardous Waste

Waste Disposal Methods: Refer to National or Local regulations before disposal

Section 14: Transport Information

This product is not classified as hazardous material for transport

Section 15: Regulatory Information

None

Section 16: Additional Information

SDS creation date: 10/26/2018



COMPOSITION	100% PET (>75-% Recycled PET)
THICKNESS	9mm, 12mm, 15mm, other custom thicknesses available
DENSITY	1900g/sqm-2400g/sqm (approx 14pcf)
DIMENSIONS	Standard Panel 4' x 8', 4' x 9
FIRE RATINGS	ASTM E84 – Class A
ACOUSTIC NRC	0.3-0.9 Depending on Thickness and Airgap
APPLICATION	Tackable Wall Surface, tack boards, wall fins, hanging ceiling clouds, Hanging fins, various wall applications for acoustical wall panels.
PLEASE NOTE	Variation in thickness, fiber mix and color as well as flecks and other slight surface blemishes are an inherent feature of this product and are unavoidable. Variation from batch to batch may occur.
KEY FEATURES	Our PET “Sound-Tack” Panels feature a superior tackable surface for visual display along with acoustical sound absorption. Our panels are also aesthetically pleasing for your unique application. They can be cut in multiple shapes and sizes to accommodate any design. ONNiT Acoustical Wall Panels are Eco-friendly and recycled. Not only are these panels light weight, but also very durable and hard-wearing. We offer these panels in 35 color options.



Light Peach



Arizona Sun



Orange Peel



White



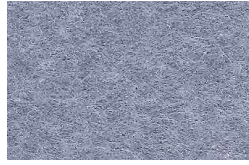
Buckskin



Dark Buckskin



Silver Marble



Arctic Seal



Graphite



Pear Green



Lime Green



Emerald Green



Night Blue



Apple Red



Cranberry



Amethyst



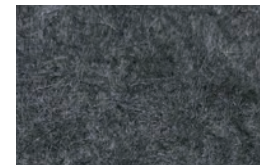
Baby Blue



Pacific Blue



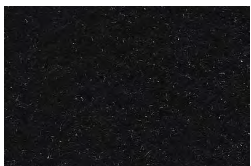
Admiral Blue



Shadow



Ash Gray



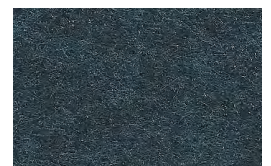
Jet Black



Charcoal



Blue Jay



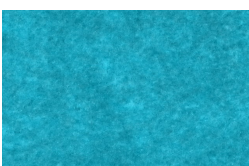
Forest Green



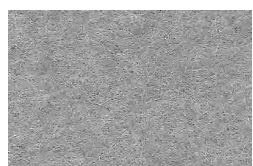
Blue Ice



Dark Silver Marble



Azure



Elephant Grey



Aruba Blue



Aquatic Blue



Smokey White















PET FELT WALL CEILING PANELS

PART 1 – GENERAL

1.1 RELATED DOCUMENTS

- A. Drawings and general provisions of the Contract, including General and Supplementary Conditions and Division 01 Specification Sections, apply to this Section.

2.1 SUMMARY

- B. This Section includes PET Wall and Ceiling Panels and perimeter trim(if required)
 - 1.
- C. Related Sections include the following:
 - 1. Per Architect

1.4 ACTION SUBMITTALS

- A. Product Data: For each type of panel edge, core material, and mounting indicated.
- B. Shop Drawings: For PET Wall and Ceiling Panels. Include mounting devices and details; **details at panel head, base, joints, and corners; and details at ceiling, floor base, and wall intersections.** Include elevations showing panel sizes and direction. Indicate panel edge and core materials.
- C. Samples for Initial Selection: For each type of PET Wall and Ceiling Panels manufacturer's full range of color and thickness.
- D. Samples for Verification: For the following products. Prepare Samples from same material to be used for the Work.
 - 1. Panel Edge: **12-inch-(300mm-)** long Sample showing edge profile, corner, and finish.
 - 2. Core Material: **12-inch-(300mm-)** beveled edge sample showing each corner.
 - 3. Mounting Device: Full-size Sample.
 - 4. Sample Panels: No larger than **36 by 36 inches (914 by 914 mm)**. Show joints and mounting methods.
- E. Product Certificates: For each type of acoustical wall panel, signed by product manufacturer.

1.5 INFORMATIONAL SUBMITTALS

- A. Coordination Drawings: Show intersections with wall base, doors, electrical outlets and switches, thermostats, lighting fixtures, air outlets and inlets, access panels, and other adjacent work.
- B. Qualification Data: For fabricator and testing agency.
- C. Product Test Reports: Based on evaluation of comprehensive tests performed by a qualified testing agency, for each type PET Wall and Ceiling Panels.

1.6 CLOSEOUT SUBMITTALS

- A. Maintenance Data: For PET Wall and Ceiling Panels to include in maintenance manuals. Include written cleaning and stain-removal recommendations.
- B. Warranty: Special warranty specified in this Section.

1.7 MAINTENANCE MATERIALS SUBMITTALS

- A. Furnish extra materials described below, before installation begins, that match products installed and that are packaged with protective covering for storage and identified with labels describing contents.
- B.
 - 1. PET Wall and Ceiling Panels: Full-size units equal to 5 percent of amount installed, but no fewer than 5 attachment devices.

1.8 QUALITY ASSURANCE

- A. Fabricator Qualifications: Shop that employs skilled workers who custom-fabricate products similar to those required for this Project and whose products have a record of successful in-service performance.
- B. Source Limitations: Obtain acoustical wall panels through one source from a single manufacturer.
- C. Fire-Test-Response Characteristics: Provide PET Wall and Ceiling Panels with the following surface-burning characteristics as determined by testing identical products per ASTM E 84 by UL or another testing and inspecting agency acceptable to authorities having jurisdiction [and in accordance with 803.6.2 of 2016 IBC](#)
 - 1. Flame-Spread Index: 25 or less.
 - 2. Smoke-Developed Index: 450 or less.
- D. Mockups: Build mockups to verify selections made under sample submittals and to demonstrate aesthetic effects and set quality standards for materials, fabrications and installation.
 - 1. Install mockups in the location and of the size indicated or, if not indicated, as directed by Architect.
 - 2. Install mockup of typical wall area as shown on Drawings.
 - a. Include intersection at **wall and ceiling corner and door opening**.
- E. Preinstallation Conference: Conduct conference at Project site to comply with requirements in Division 01 Section "Project Management and Coordination."

1.9 DELIVERY, STORAGE, AND HANDLING

- A. Comply with Felt panel wall panel manufacturers' written instructions for minimum and maximum temperature and humidity requirements for shipment, storage, and handling.
- B. Deliver materials and panels in unopened bundles and store in a temperature-controlled dry place and adequate air circulation.
- C. Protect panel edges from crushing and impact.

1.10 PROJECT CONDITIONS

- A. Environmental Limitations: Do not install PET Wall and Ceiling Panels until spaces are enclosed and weatherproof, wet work in spaces is complete and dry, work above ceilings is complete, and ambient temperature and humidity conditions are maintained at levels indicated for Project when occupied for its intended use.
- B. Lighting: Do not install PET Wall and Ceiling Panels until **a lighting level of not less than 50 fc (538 lux)** is provided on surfaces to receive PET Wall and Ceiling Panels.
- C. Air-Quality Limitations: Keep PET Wall and Ceiling Panels from exposure to airborne odors, such as tobacco smoke, and install panels under conditions free from odor contamination of ambient air.
- D. Field Measurements: Verify locations of PET Wall and Ceiling Panels by field measurements before fabrication and indicate measurements on Shop Drawings.

1.11 WARRANTY

- A. Special Warranty: Manufacturer's standard form in which manufacturer agrees to repair or replace components of PET Wall and Ceiling Panels that fail in performance, materials, or workmanship within specified warranty period.
 - 1. Failures in materials include but are not limited to, fabric sagging, distorting, or releasing from panel edge; or warping of core.
 - 2. Warranty Period: **Two** years from date of Substantial Completion.

Part 2 – PRODUCTS

2.1 TACKABLE PANELS – SOLID CORE

- B. Available Manufacturers: Subject to compliance with requirements, manufacturers offering products that may be incorporated into the Work include, but are not limited to, the following:
 - 1. Basis of Design: ONNiT Systems "PET Wall and Ceiling Panels
- C. Surface Texture: Smooth
 - 1. Surface finish: Smooth

2. Color: as selected by Architect
3. Shapes: as shown
 - (a) Thickness: ½ inch
 - (b) Density **min 1900g/sqm – 2400g /sqm (approx. 14 pcf)**
 - (c) Edge Detail: 1/8" Bevel
 - (d) Flame Spread: (ASTM E 84) Class A
 - (e) Noise Reduction Coefficient (NRC): ASTM C423; 0.4-.90
 - (f) Natural Anodized Perimeter J Trim at top, bottom and sides

D. ATTACHMENT SYSTEMS

1. Installation Hardware for wall mount
2. Silicone Adhesive mounting if appropriate for substrate
3. Anodized J trim fastened to stud or block wall

2.2 FABRICATION

- A. PET Wall and Ceiling Panels: Panel construction consisting of PET FELT material formed into panel of a stable cor.
- B. Dimensional Tolerances of Finished Units: Plus or minus **1/16 inch (1.6mm)** for the following:
 1. Thickness.
 2. Edge straightness.
 3. Overall length and width.
 4. Squareness from corner to corner.
 5. Chords, radii, and diameters.

PART 3 – EXECUTION

3.1 EXAMINATION

- A. Examine panels, substrates, clocking, and conditions, with installer present, for compliance with requirement, installation tolerances, and other conditions affecting performance of wall panels.
 1. Proceed with installation only after unsatisfactory conditions have been corrected.

3.2 INSTALLATION

- A. Install PET Wall and Ceiling Panels /pieces in locations indicated with vertical surfaces and edges plumb, top edges level and in alignment with other panels, faces flush, and scribed to fit adjoining work accurately at borders and at penetrations.
 1. Cut units to be at least 50 percent of unit width, with facing material extended over cut edge to match uncut edge. Scribe acoustical wall panels to fit adjacent work. Butt joints tightly.

- B. Comply with PET Wall and Ceiling Panels manufacturer's written instruction for installation of panels using type of concealed mounting accessories indicated or, if not indicated, as recommended by manufacturer. Anchor panels securely to supporting substrate.
- C. Match and level pattern and grain among adjacent panels.
- D. Installation Tolerances: As follows:
 - 1. Variation from Level and Plumb: Plus or minus **1/16 inch (1.6mm)**
 - 2. Variation of Panel Joints from Hairline: Not more than **1/16 inch (1.6mm)** wide.

3.3 CLEANING

- A. Remove pills and extraneous materials.
- B. Clean panels all panels (if needed) on completion of installation, to remove dust and other foreign materials according to manufacturer's written instructions.

3.4 PROTECTION

- A. Provide final protection and maintain conditions, in a manner acceptable to manufacture and installer, to ensure that PET Wall and Ceiling Panels are without damage or deterioration at time of Substantial Completion.
- B. Replace PET Wall and Ceiling Panels that cannot be cleaned and repaired in a manner approved by Architect, before time of Substantial Completion.